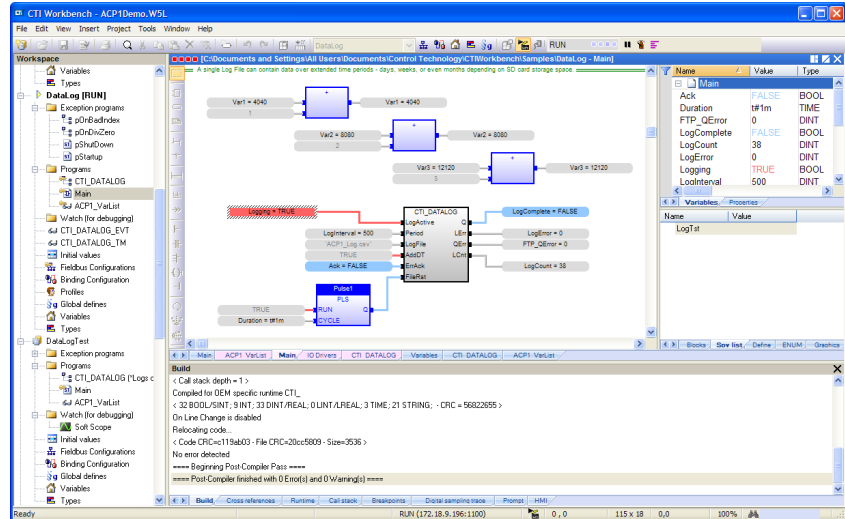


- Modbus Ethernet (Client / Server or Master / Slave)
- Serial Modbus (Master, Slave)
- General ASCII (Send, Receive)
- Network Data Exchange
- MQTT Client
- Supports globalization
- Network Communications Supported (JANUS Controllers)
 - CAMP Client (TCP, UDP, Multicast)
 - CAMP Server
 - CTI Enhanced DataCache to CXXX controllers
 - Local I/O
 - Remote I/O
 - Profibus DP Master
 - Ethernet/IP Adapter (server)
 - Ethernet/IP I/O Scanner (client)
 - Ethernet/IP Tag Client
 - Ethernet/IP Tag Server
 - Modbus Ethernet (Client / Server or Master / Slave)
 - Network Data Exchange
 - MQTT Client



Maintenance and Support Options

Workbench includes free upgrades for 1yr after the initial purchase. After that year you can continue to use the software, but you will not be able to run new versions of the software which are released after the expiration of your initial term. In order to have access to run newer versions, you can purchase a 1 or 2 year software maintenance agreement using the part numbers in the table below.

Ordering information

2500P-WB-USB	Workbench IDE, Standard License
2500P-WB-USB-S3	Workbench IDE, Subscription License, 3 mos
2500P-WB-USB-S6	Workbench IDE, Subscription License, 6 mos
2500P-WB-AMP1	Workbench IDE, Annual Maintenance, 1yr
2500P-WB-AMP2	Workbench IDE, Annual Maintenance, 2yr
2500P-WB-RMP1	Workbench IDE, Annual Maintenance Reinstatement if expired less than 1 yr
2500P-WB-RMP2	Workbench IDE, Annual Maintenance Reinstatement if expired 1-2 yr