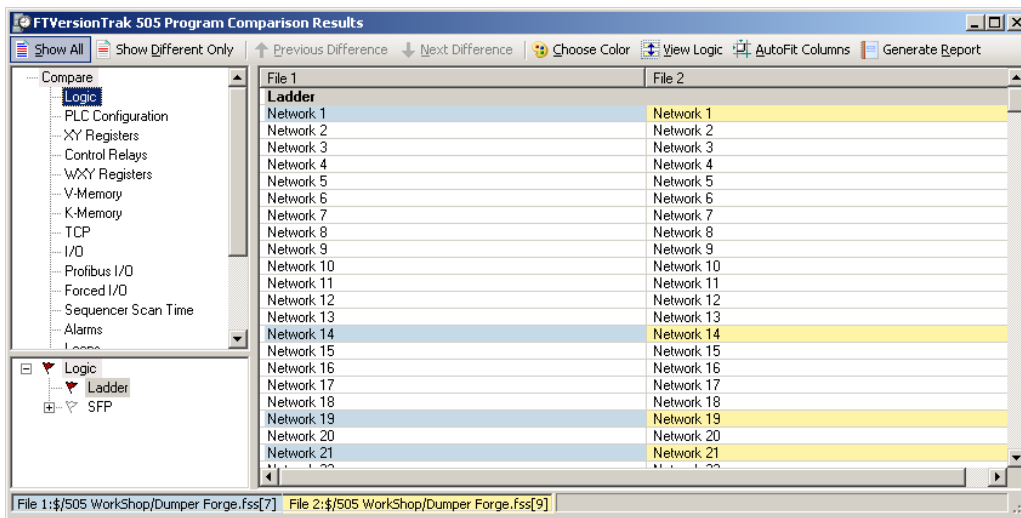


File comparison in FTVersionTrak™

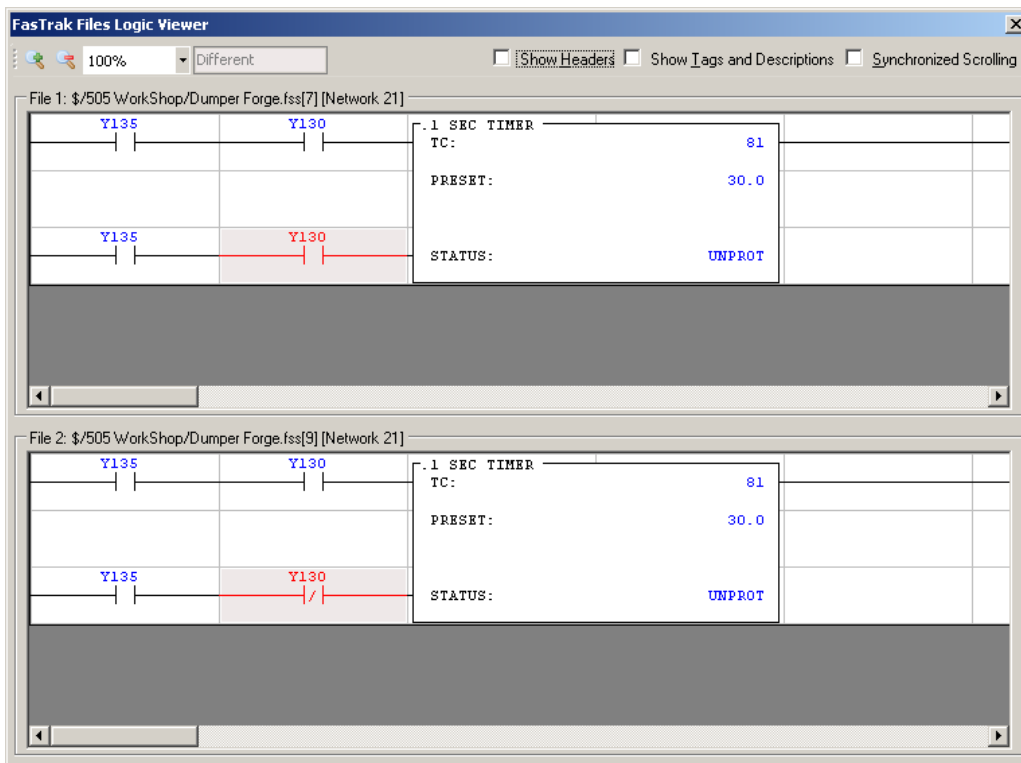
The file comparison feature available in FTVersionTrak™ executes differently depending on whether WorkShop™ files (505WorkShop™ & Modicon™) or standard files are compared.

a) between two WorkShop™ (505WorkShop™ or PLC WorkShop for Modicon™) files:

In the first screen shot, the upper left pane displays a tree list of WorkShop™ program categories that can be compared. In this example, the "Logic" category is selected, and a list of networks from the two files being compared appears on the right. Networks that are different between the two files are highlighted with blue and yellow backgrounds (users can change these background colours).



Double click one of the different networks in the list on the right, and the window in below screen shot appears. FTVersionTrak™ highlights the actual differences in ladder logic, documentation, data, configuration, etc. in a split-screen window. The actual differences in the logic are displayed in red on a darker background.

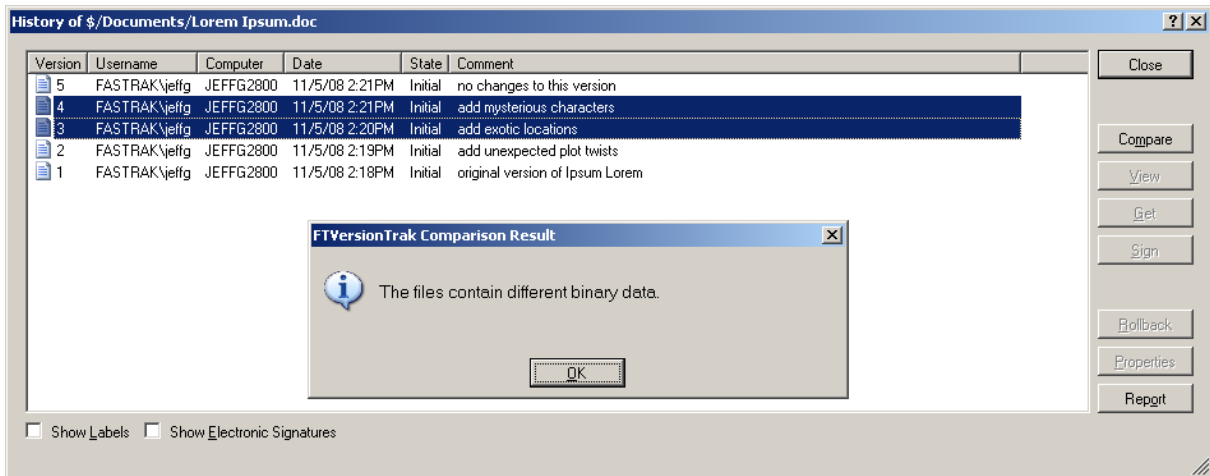
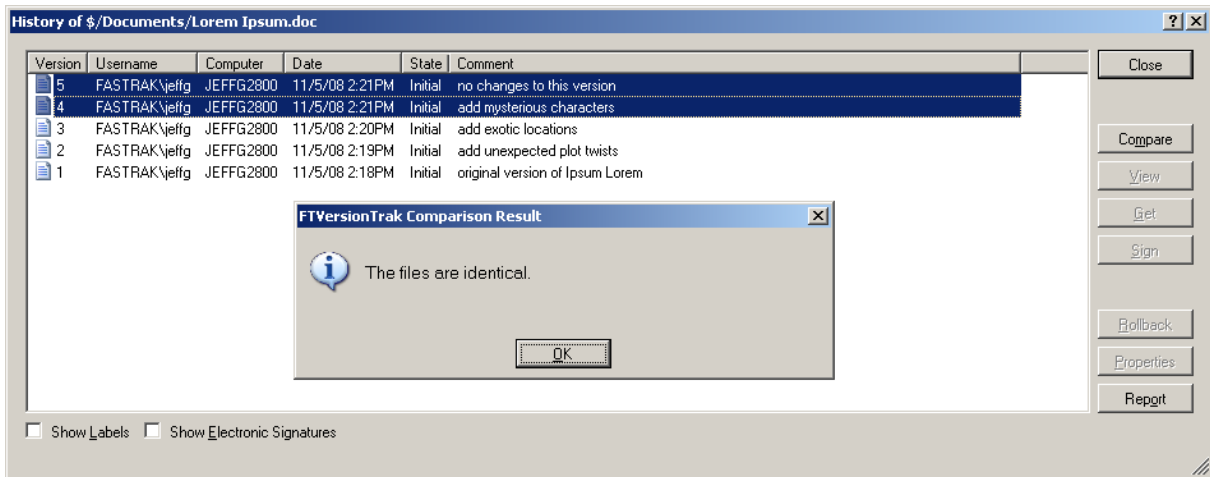


b) between two non-WorkShop™ files

In addition to WorkShop™ files, FTVersionTrak™ can store any type of file.

The same check in/check out, file-locking, date/time/user stamp, history, and other capabilities are available for non-WorkShop™ files, however **FTVersionTrak™ does not yet display detailed split-screen comparisons for non-WorkShop™ files.**

Instead, FTVersionTrak™ simply states that the two compared files are either identical, or are different. For example, the attached screen shots illustrate how FTVersionTrak™ compares identical and different versions of a Microsoft® document file.



FasTrak SoftWorks Inc. evaluates the possibility of offering the detailed compare functionality also for other files than 505Workshop™ and PLC WorkShop for Modicon™ program files.