

PLC WorkShop Suite for 505

PLC WorkShop Suite™ for 505® provides all the tools necessary for a robust PLC programming environment. It offers the programming, testing, troubleshooting, and management capabilities you need at your fingertips.

First in a series of enhanced capabilities to the *PLC WorkShop Suite* line, new ladder instructions are available exclusively through *PLC WorkShop* and CTI 2500 Series™ processors. These instructions—including MegaEDRUM, Floating Point Compare, On Delay Coil, and Off Delay Coil—upgrade the 505 language within the CTI 2500 Series processors.

PLC WorkShop for 505

Designed for use with the entire line of CTI 2500 Series and Simatic® 505 PLCs, *PLC WorkShop* offers complete support of relay ladder logic, Special Function programs and subroutines, Analog alarms and PID loops, and PowerMath functions. It is the only product on the market to support the expanded functionality of the CTI 2500 Series processors.

FTVersionTrak PE

The *FTVersionTrak™* programmer edition, *FTVersionTrak PE™*, allows you to incorporate version control practices into your programming environment. It secures and safeguards your *PLC WorkShop* files ensuring that if a problem occurs with one of your programs, a backup file is readily available. *FTVersionTrak PE* may also be used to compare the differences in logic, configuration, I/O configuration, registers, documentation, and other program components between two versions of a program file. An integrated toolbar in *PLC WorkShop* means you never need to leave *PLC WorkShop* to perform version control tasks.

505 Simulator

Test and debug your PLC programs before going live with the only software of its kind for CTI 2500 and Simatic 505 PLCs. *505 Simulator™* allows you to program, run, and test ladder logic, Special Function programs and subroutines, PID loops, Analog alarms and simulated I/O in a fraction of the time, and without requiring expensive hardware. An Integrated Debugger toolbar in *PLC WorkShop* gives you access to valuable testing features, such as a step advancement mode by scan, network, or SF instruction; conditional breakpoints; and a complete batch-oriented I/O Simulator.

FasTrak SoftWorks, Inc. is committed to the long-term development, service, and support of programming software for CTI 2500 Series and Simatic 505 PLCs.

Visit www.fast-soft.com or contact Sales for a demo or additional information: sales@fast-soft.com or 262.238.8088.

FasTrak
SoftWorks, Inc.

P.O. Box 240065

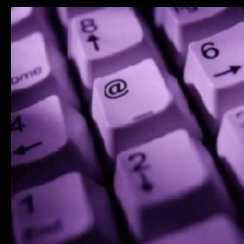
Milwaukee, WI 53224-9003

262.238.8088

Fax: 262.238.8080

Web: www.fast-soft.com

Information: info@fast-soft.com

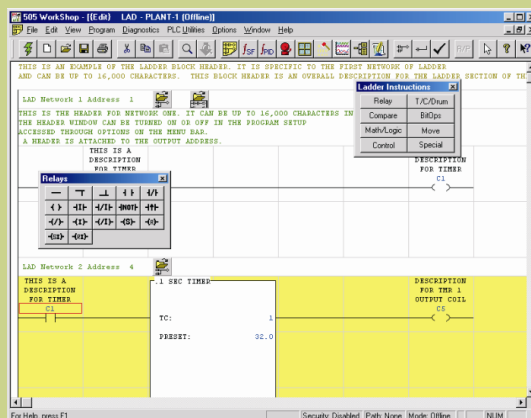


PLC WorkShop Suite for 505

PLC WorkShop for 505

Offering a flexible programming environment and configurable user interface, *PLC WorkShop*:

- Incorporates symbolic programming and utilizes an instruction toolbar and mnemonics
- Contains built-in data acquisition capabilities
- Records program changes in an Activity Audit Trail
- Displays a dynamic real-time address Cross Reference list for convenient address tracking
- Utilizes powerful NT security management (Windows Authentication) with password protection
- Supports all methods of communications including Serial with modem support (COM1 – COM256) TCP/IP, H1, FMS, and Serial TIWAY
- Allows you to open multiple PLC programs and data windows and concurrently connect online with multiple PLCs
- Supports networked printers and provides print preview capabilities
- Provides multiple documentation options
- Offers the ability to import and export headers and TCP/IP address lists
- Allows charts to be printed from the Data Window
- Supports saving and loading communication information with programs



Profibus Configurator

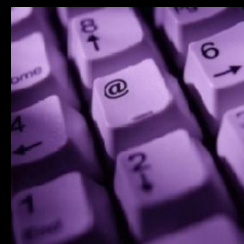
Created as a replacement for Siemens' COM Profibus configuration editor, *PLC WorkShop's* Profibus Configurator has been designed to make Profibus network setup and I/O configuration simple and convenient. Use the Profibus Configurator to manage and configure your 505-mastered Profibus-DP network. The Profibus Configurator allows concurrent configuration changes and ensures that the configuration is always up-to-date with the program. It saves the entire Profibus configuration within the *PLC WorkShop* program file including bus parameters, hardware assignments, and I/O addressing.

Use a Competitor Product?

WorkShop offers an easy transition from legacy programs including:

- Direct one-step import of TISOFT2™ programs
- Direct one-step import of TISOFT2 data chart files
- Ability to use familiar TISOFT hot keys
- Simple merging of COM Profibus configurations

Visit www.fast-soft.com or contact Sales for a demo or additional information: sales@fast-soft.com or 262.238.8088.



PLC WorkShop Suite for 505

FTVersionTrak PE

The *FTVersionTrak* Programmer Edition, "*FTVersionTrak PE*", is the ideal solution for *PLC WorkShop* users who wish to incorporate version control practices into their programming environment. Acting as insurance against lost or overwritten PLC programs, *FTVersionTrak PE* secures and safeguards your *PLC WorkShop* files and stores multiple versions of the same program. Comparing versions of the same file against each other to determine the differences allows you to roll back to a previous version if a change causes unexpected results. In addition, each time a program is edited, comments about what has changed can be stored with that version of the program file for future reference.

FTVersionTrak PE offers *PLC WorkShop* users:

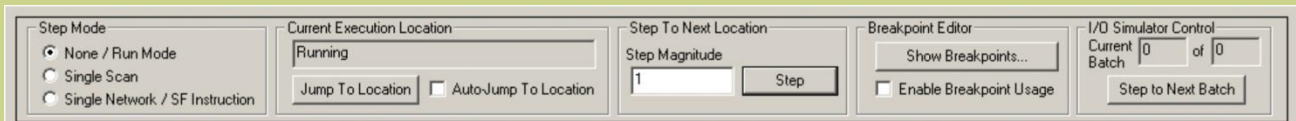
- **Insurance**—*FTVersionTrak PE* delivers peace of mind. Should a problem occur with a PLC program, a backup copy is always readily available for download.
- **Ease-of-Use**—*FTVersionTrak PE* may be immediately put to use after it has been installed without requiring setup of any kind.
- **Convenience**—Every action you wish to perform can be accomplished within the *PLC WorkShop* application. Working within the familiar *PLC WorkShop* interface is convenient and designed to save you time.



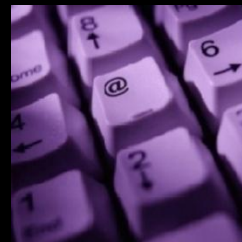
FTVersionTrak PE protects your PLC programs

505 Simulator

505 Simulator offers logic simulation from any Simatic / TI 545 and 555 processor and all CTI 2500 Series PLCs. Using your computer's TCP/IP connection, you connect to *505 Simulator* the same way you would connect to a real, live PLC. When a program is online with *505 Simulator*, the simulator responds in a similar manner to the type of PLC that is being simulated. Programs may be loaded, saved, edited, and executed while online with the simulator.



Visit www.fast-soft.com or contact Sales for a demo or additional information: sales@fast-soft.com or 262.238.8088.



PLC WorkShop Suite for 505

SPECIFICATIONS

Product Upgrades

Regular product upgrades may be obtained by convenient download from www.fast-soft.com. Notifications via email are sent for all major feature releases.

Customer Service

When you contact us for support, you will receive immediate and accurate solutions to your questions resulting in less downtime. You will have access to the engineers who design our software packages.

Site Licenses

Keyless site licenses are available, which eliminate tracking and losing keys.

Annual Maintenance Agreements

Following expiration of the one-year warranty period, maintenance agreements—which include unlimited technical support and product upgrades—are available for purchase on an annual basis.

PLC Support

Supports the entire line of **CTI 2500** PLCs:

CTI 2500 Series: 2500-C100; C200; C300; C400

Supports the entire line of **Simatic / TI 505** PLCs including:

500 Series: **520** 1101; **520C** 1101, 1102; **525** 1102, 1104; **530** 1102, 1004, 1008; **530C/T** 1104, 1108, 1112; **535** 1104, 1108, 1112; **560** 2120; **565** 2120; **560T** 2820; **565T** 2820

505 Series: **545** 1101–1106; **555** 1101–1106; **575** 2102 – 2106

Windows Compatibility

Designed and tested under Windows® 95, 98, Millennium, NT, 2000, XP, Vista, and 7.

Speed

Full 32-bit Windows implementation allows for fast uploading and downloading of logic, data updating, cross referencing, printing, and other functions.

Communications Support

Supports all methods of communications including Serial with modem support (COM1– COM256), TCP/IP, H1, FMS, and Serial TIWAY.

SCADA

Contains built-in SCADA capabilities for up to 5 data points including data logging and trending with high speed, reliable OPC communications. *PLC WorkShop* is fully compatible with the full version of FasTrak SoftWorks *ControlShop*.

NT Security

Incorporates one-time, server-based security configuration, complete administrator control of all editing, save and load functions, documentation, program set-up, and auditing of all user operations.

Activity Audit Trail

Provides you with the ability to track program changes.

TISOFT Conversion

To ease your transition from TISOFT, TISOFT2 files can be loaded, and familiar TISOFT hotkeys and mnemonics can be used.

SoftShop Conversion

To ease your transition from SoftShop™, SoftShop files can be loaded and used.

COM Profibus Conversion

To ease your transition from COM Profibus, COM Profibus configuration files can be merged directly into your *PLC WorkShop* program.

PLC WorkShop Suite, PLC WorkShop, FTVersionTrak, 505 Simulator, and ControlShop are trademarks of FasTrak SoftWorks, Inc. CTI 2500 Series is a trademark of Control Technology, Inc. Simatic and 505 are registered trademarks, and TISOFT, and SoftShop are trademarks of Siemens. Windows is a registered trademark of Microsoft Corporation. Other product names mentioned herein are used for identification purposes only and may be trademarks of their respective companies.

Visit www.fast-soft.com or contact Sales for a demo or additional information: sales@fast-soft.com or 262.238.8088.

