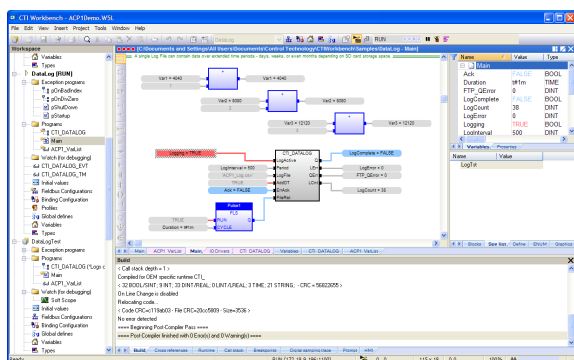


2500P-WB-USB

Janus Workbench Software



Description

The Janus Workbench Integrated Development Environment is used for development of application programs and configuration of communications for the new generation of CTI products including the new Janus Processor and 2500P-ACP1 Application Coprocessor. Janus Workbench is a full-featured development environment with integrated programming editor, I/O and fieldbus configuration tool, debugger, trend, data monitor, and simulator. Janus Workbench is PLCopen certified, and may be used to develop programs that adhere to IEC-61131-3 requirements.

The application program may be developed in any of the five IEC-61131 programming languages:

- Ladder Diagram (LD)
- Function Block Diagram (FBD)
- Structured Text (ST)
- Instruction List (IL)
- Sequential Function Chart (SFC)

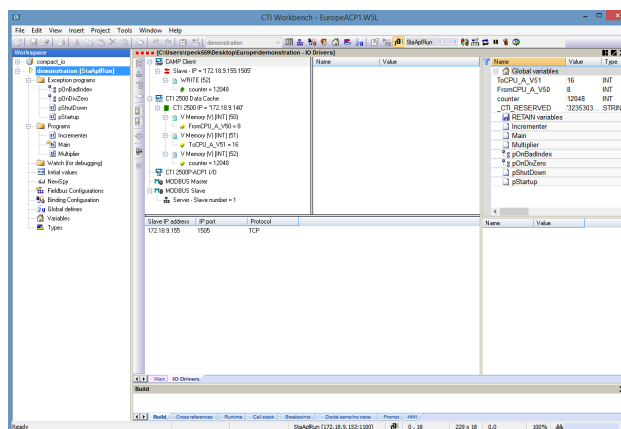
A complete library of functions is provided to perform the following tasks:

- Complex mathematical computations
- Boolean logic
- File management (supports file transfer while controller is running)
- String handling
- Timer/Counter operations
- PID control
- Real-time data logging

CTI Workbench is compatible with Microsoft Windows® 10 and 11. A quad-core processor and a minimum of 8GB of RAM is recommended.

Features

- Program editors for all five IEC languages
- Development Aids
 - Graphical editor for creation of animated objects for monitoring and HMI applications
 - Custom online change facility with reporting / cancellation feature
 - Customization of menus, windows, fonts, display colors, and editing rules
 - Program translation between ST, LD, FBD, and IL languages
 - Navigation tools for compare, search, and editing across all programs
 - Automatic documentation and Revision History reporting
 - Full syntax coloring
- Time-Saving Features
 - Support of OLE drag-and-drop in all editors
 - Quick-edit mode with "on-the-fly" variable



declaration

- Auto-completion of variable and function names within editors
- Monitoring and Debugging
 - Application monitoring features such as variable "spy lists", soft-scope trend charts, digital sampling trace, and run-time status displays
 - Full array of debugging tools for PC simulator and run-time target:
 - Set Breakpoints and Tracepoints
 - Program can be paused or set to cyclic or step-by-step execution mode.
 - Call stack display shows nested execution levels for function blocks and sub-programs
- Network Communications Supported (2500P-ACP1)



Control Technology Inc.

5734 Middlebrook Pike, Knoxville, TN 37921-5962
Phone: +1.865.584.0440 Fax: +1.865.584.5720
www.controltechnology.com

ROCK SOLID PERFORMANCE. TIMELESS COMPATIBILITY.

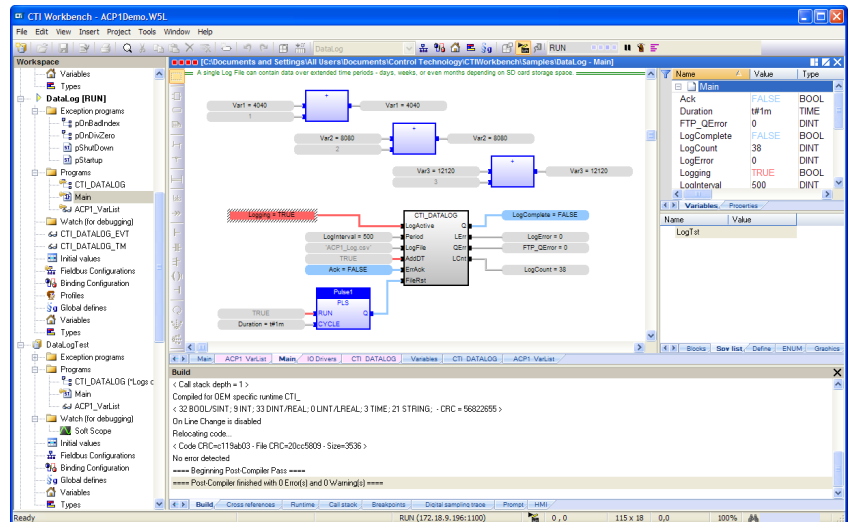
- CAMP Client (TCP, UDP, Multicast)
- Data Cache (high-speed communications to 2500-Cxxx processors)
- CTI ACP1 DataCache to CXXX controllers
- Ethernet/IP (Scanner, Adapter, Tag Client)
- Modbus Ethernet (Client / Server or Master / Slave, TCP only)
- Serial Modbus (Master, Slave)
- Serial General ASCII (Send, Receive)
- Network Data Exchange (Peer-Peer)
- MQTT Client

- Supports globalization



- Network Communications Supported (JANUS Processor)

- CAMP Client (TCP, UDP, Multicast)
- CAMP Server (TCP, UDP, Multicast)
- CTI Enhanced DataCache (high-speed communications to 2500-Cxxx Processors)
- Local I/O
- Remote I/O
- Profibus DP Master I/O
- Ethernet/IP Adapter (server)
- Ethernet/IP I/O Scanner (client) - includes support for Explicit Message Send/Receive
- Ethernet/IP Tag Client
- Ethernet/IP Tag Server
- Modbus Ethernet (Client / Server or Master / Slave, TCP & UDP)
- Network Data Exchange (Peer-Peer)
- MQTT Client
- OPC-UA Server (V1.82 and above)



Maintenance and Support Options

Workbench includes free upgrades for 1yr after the initial purchase. After that year you can continue to use the software, but you will not be able to run new versions of the software which are released after the expiration of your initial term. In order to have access to run newer versions, you can purchase a software maintenance agreement using the part numbers in the table below.

Ordering information—New Licenses

2500P-WB-USB	Workbench IDE, USB, Standard License
2500P-WB-USB5	Workbench IDE, USB, Standard License, 5-pack
2500P-WB-USB10	Workbench IDE, USB, Standard License, 10-pack
2500P-WB-USB25	Workbench IDE, USB, Standard License, 25-pack
2500P-WB-DIG5	Workbench IDE, Digital, Standard License, 5-pack
2500P-WB-DIG10	Workbench IDE, Digital, Standard License, 10-pack
2500P-WB-DIG25	Workbench IDE, Digital, Standard License, 25-pack
2500P-WB-USB-S3	Workbench IDE, Subscription License, 3 mos
2500P-WB-USB-S6	Workbench IDE, Subscription License, 6 mos

Ordering information—Maintenance

2500P-WB-AMP1	Workbench IDE, Annual Maintenance, 1yr
2500P-WB-AMP1-5P	Workbench IDE, Annual Maintenance, 1yr, for 5-pack Licenses
2500P-WB-AMP1-10P	Workbench IDE, Annual Maintenance, 1yr, for 10-pack Licenses
2500P-WB-AMP1-25P	Workbench IDE, Annual Maintenance, 1yr, for 25-pack Licenses
2500P-WB-AMP2	Workbench IDE, Annual Maintenance, 2yr
2500P-WB-AMP2-5P	Workbench IDE, Annual Maintenance, 2yr, for 5-pack Licenses
2500P-WB-AMP2-10P	Workbench IDE, Annual Maintenance, 2yr, for 10-pack Licenses
2500P-WB-AMP2-25P	Workbench IDE, Annual Maintenance, 2yr, for 25-pack Licenses
2500P-WB-AMP5	Workbench IDE, Annual Maintenance, 5yr
2500P-WB-AMP5-5P	Workbench IDE, Annual Maintenance, 5yr, for 5-pack Licenses
2500P-WB-AMP5-10P	Workbench IDE, Annual Maintenance, 5yr, for 10-pack Licenses
2500P-WB-AMP5-25P	Workbench IDE, Annual Maintenance, 5yr, for 25-pack Licenses
2500P-WB-RMP1	Workbench IDE, Annual Maintenance Reinstatement if expired less than 1 yr
2500P-WB-RMP2	Workbench IDE, Annual Maintenance Reinstatement if expired 1-2 yr