



# ***NEWSLETTER***

## ***JUNE 2012***

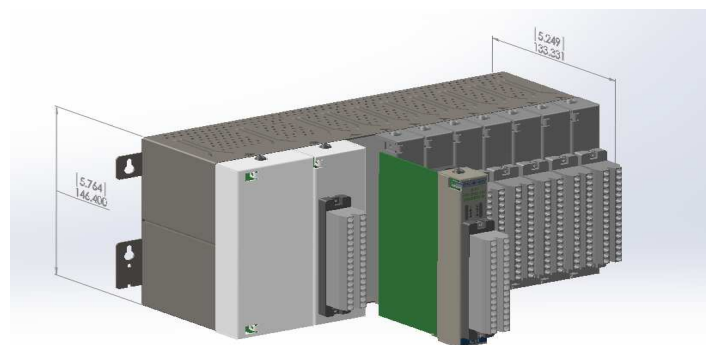
### ***Products under development***

#### **NEW 2500 SERIES® COMPACT I/O**

Many of our users have expressed concerns that installing remote I/O drops can be pretty expensive if only a few points are required. In order to solve this problem and allow our customers to still be able to use CTI proven technology, CTI is currently developing the new "2500 Series® Compact". This new product line will be reduced in size, function and price!

These new Compact I/Os will allow an easy connection to our 2500 Series® systems, using RIO or Profibus-DP. I/O specifications, operation and wiring will be similar to 2500 Series® I/O, and they will be hot-swappable.

Module configuration will be done using X/Y/WX/WY memory as in the current PLC Workshop™ Suite development environment.





## Products under development

# APT® REPLACEMENT PRODUCT

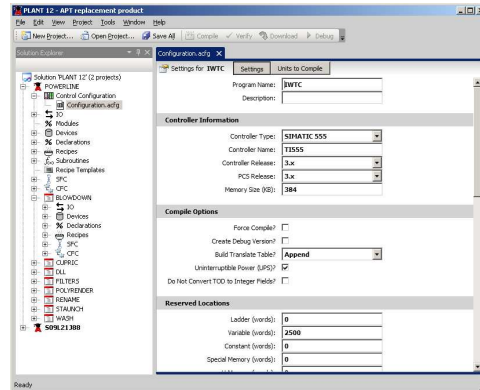
The FasTrak SoftWorks, Inc. APT® replacement product is the only software designed to directly replace the obsolete APT® software by Siemens®.

Together with CTI 2500 Series® PLCs, APT®RP extends viability of the APT® programming languages for years to come and eliminates the cost and risk of migrating to new hardware and software platforms.

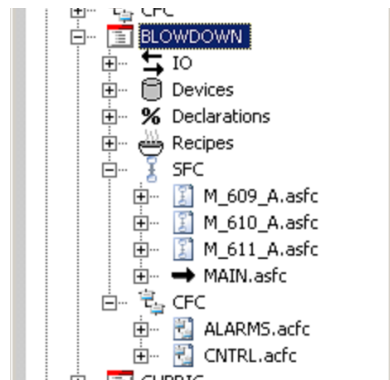
APT®RP offers the same functionality that Microsoft® DOS®-based APT® users are accustomed to within a modern Windows® environment. Supporting all APT® languages, it creates new and maintains existing APT®-based PLC programs.

Experience the power and compatibility of an application running in the latest Microsoft® Windows® operating system after effortlessly importing existing APT® programs in one easy step!

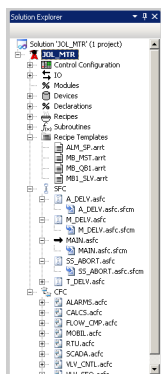
A few examples of APT® Replacement Product functions:



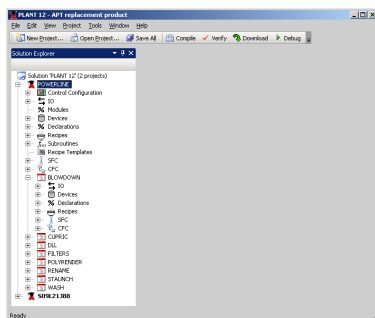
PLC configuration



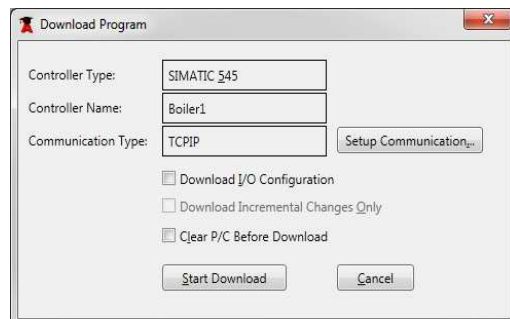
Unit content



Program directory



Program content



Download options

Version 1.00 alpha B soon available



## Product Releases

### 2500P-ECC1 ETHERNET COMMUNICATIONS COPROCESSOR

The 2500P-ECC1 Ethernet Communications Coprocessor provides state-of-the-art features and performance for Ethernet communication when using CTI 2500 Series® Processors. It uses a dynamic memory cache to give extremely quick response to queries from HMI systems, with no dependence



on CPU scan time. It also provides a fully configurable

interface for setting up Modbus-TCP and CAMP client/server communications. Most importantly, it features a completely new facility which provides peer to peer network communications between PLCs using a new "report on change" protocol.

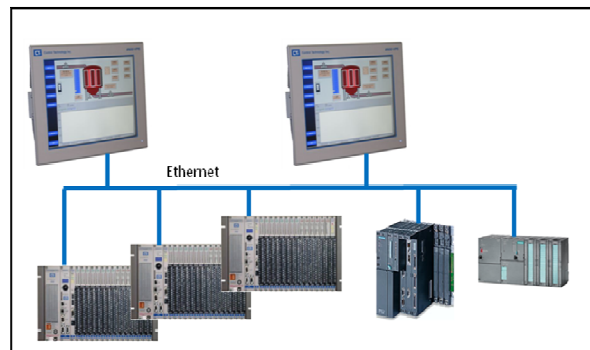
Release date is planned by end of August 2012.



## Product Releases

### 2500-VP15-N4-W7R 15" HMI Panel (Running under Windows® 7 embedded, NEMA4, 256 tag) – ZENON V7

Planned as the first step of a fully integrated solution that uses a single tag database and single development tool for control logic and visualization, the 2500-VP15 HMI Panel, now runs under Windows® 7 embedded, and is available with the latest ZENON V7.



It allows "plug and play" installation with 2500 Series® processors.

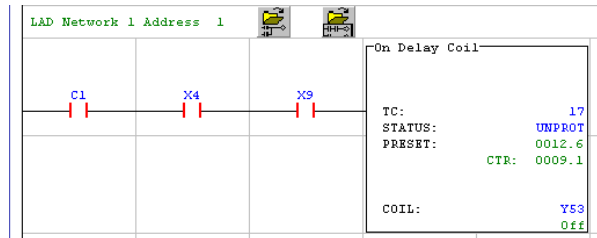
## NEW PLC WORKSHOP™ SUITE RELEASE

FasTrak's enriched programming solution for CTI 2500 series™ and Siemens® 505 series processors has become PLC WorkShop Suite™. It has been designed and tested under Windows® 95, 98, NT, 2000, Millennium, XP, Vista and 7. PLC WorkShop Suite™ offers following features :

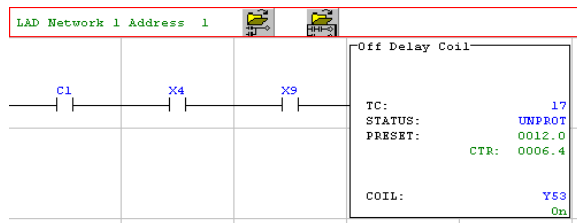
- . 505 Workshop™ for writing, editing and monitoring PLC programs
- . FTVersionTrak PE, for securing and safeguarding your WorkShop™ files and comparing differences in logic, configuration, I/O configuration, registers, documentation between two versions of a WorkShop™ program file
- . 505 Simulator, for testing and debugging ladder logic, special functions programs, subroutines, PID loops, analog alarms and simulated I/O without the use of a PLC before going live.

This brand new release delivers exclusive new ladder instructions when used with CTI 2500® Series controllers, such as :

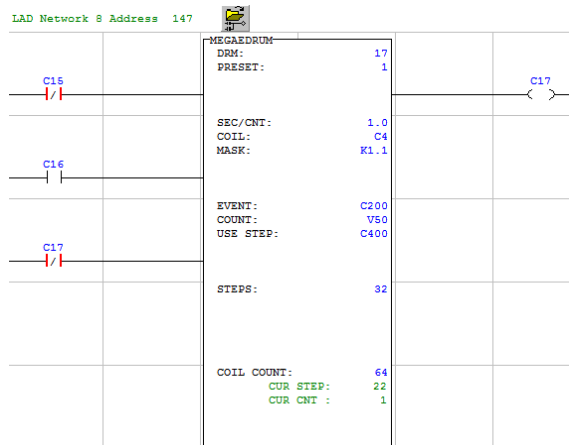
- MegaEDRUM
- Off Delay Coil
- On Delay Coil
- Floating Point Comparison



**On Delay Coil in a ladder logic network**



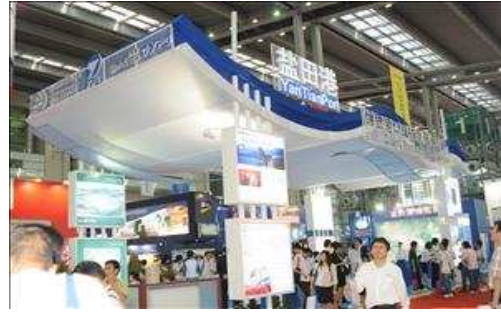
**Off Delay Coil in a ladder logic network**



**MegaEDRUM instruction in a ladder logic network**

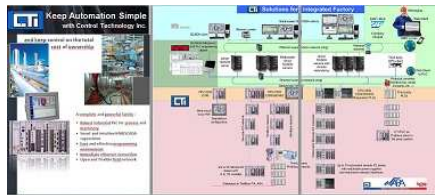
More info on 'product bulletin' & 'case study' at following link :  
<http://www.fast-soft.com/page.php?20>

CTI, LONGLITE & NAPA are pleased to invite you to visit their booth at the 16th International Industrial Control & Automation Exhibition for South China in Shenzhen, from June 20<sup>th</sup> till June 22<sup>nd</sup>. This great event belongs to the largest and most authoritative professional automation exhibitions held in China.



Join us! CTI stall is located : Hall 2D 09 – 12

<http://www.iaexpo.org/Article/ShowInfo.asp?ID=5845>



## NAPA International France

phone: +33 (0)4 93 20 63 52

fax: +33 (0)4 93 20 94 09

[sales@napa.fr](mailto:sales@napa.fr)



COPADATA



If your email address has changed or if you don't want to receive this newsletter anymore, please write to [sales@napa.fr](mailto:sales@napa.fr)