

# 2500 Series<sup>®</sup> HMI Panels

Powered by zenon

HMI/SCADA

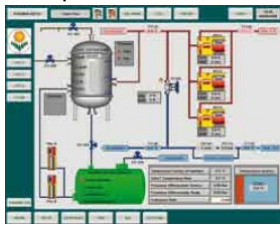


## Description

2500 Series<sup>®</sup> HMI Panels are designed to allow easy connection and configuration of HMI applications on CTI 2500 Series<sup>®</sup> Processors. Panels are available in 12" and 15" sizes and are based on the latest Intel Atom processor technology and feature a high-brightness LCD panel for easy readability.

The combination of Windows<sup>®</sup> 7 Embedded and the COPA-DATA zenon HMI engine offers wizards-based automatic engineering, object-oriented parameterization, and efficient reuse of projects and modules. With zenon you can develop and configure a wide variety of HMI applications—from operator panels to full SCADA process systems—using a single development tool.

An optimized driver is included for connecting to CTI 2500 Series<sup>®</sup> PLCs over Ethernet. The panel can also communicate with many other PLC systems, including Siemens S5/S7 and Allen-Bradley.



Food & beverage and pharmaceutical users benefit from easy compliance with data recording and access regulations in strict accordance with FDA 21 CFR Part 11 – all at the click of a mouse.

When using CTI 2500 Series<sup>®</sup> Processors, program documentation (tag names) can be imported from your PLC Workshop program to make application development easier.

## Hardware Specifications

<b>CPU</b>	Intel <sup>®</sup> Atom <sup>™</sup> N2600 1.6GHz
<b>Memory</b>	2GB DDR2 SDRAM
<b>Network</b>	2 x RJ-45 10/100/1000Base-T
<b>Storage</b>	CFast Card Socket with 32GB
<b>LCD Display</b>	15" TFT LCD (VP15A) 12" TFT LCD (VP12)
<b>Resolution</b>	1024 x 768, XGA
<b>Backlight Life</b>	50,000 hours
<b>Luminance</b>	400 cd/m <sup>2</sup> (VP15) 500 cd/m <sup>2</sup> (VP12)
<b>Touch Screen</b>	5-wire, resistive
<b>Other Ports</b>	USB 2.0, 5 ports Serial (4 ports)
<b>Power</b>	24VDC +/-10%, 2A

## Environmental

Operating temp	0 to +55C
Storage temp	-20 to +70C
Humidity	10% - 95% noncondensing
Vibration	1Grms
Ingress	NEMA4, IP65

## Mechanical

Dimensions	390 x 52.3 x 310mm (VP15A) 15.4 x 2.06 x 12.2 in (VP15A) 326 x 44 x 259mm (VP12) 12.8 x 1.73 x 10.2 in (VP12)
Weight	4.4kg (9.7 lb)

## Shipping

Dimensions	500 x 200 x 460mm 20" x 8" x 18"
------------	-------------------------------------

Weight	7kg (15 lb)
<b>Certifications</b>	CE, FCC Class B
<b>Warranty</b>	2 years

## Software Specifications

### Runtime System

**Maximum application size is limited only by memory. No individual limits on screens, variables, or objects.**

<b>Tag count</b>	256-2048 (depending on license purchased, larger tag count possible on request)
<b>Tag definition</b>	1 tag = 1 memory location read from PLC

### Application Development System

#### Computer requirements

Windows<sup>®</sup> XP, Vista, Windows<sup>®</sup> 7, Windows<sup>®</sup> 8



Control Technology Inc.

5734 Middlebrook Pike, Knoxville, TN 37921-5962  
Phone: +1.865.584.0440 Fax: +1.865.584.5720  
www.controltechnology.com

ROCK SOLID PERFORMANCE. TIMELESS COMPATIBILITY.

# 2500 Series<sup>®</sup> HMI Panels

Powered by zenon

## zenon HMI Engine Features

zenon is a full-featured HMI and SCADA system which allows development of applications from simple operator panels to complex server-based SCADA with redundancy—all using a single development tool.

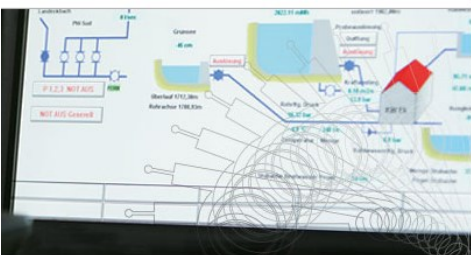
Reduce the time pressure on your projects by relying on intelligent wizards and on software that is geared towards usability. Give your engineers an



HMI/SCADA system that allows them to solve even the most challenging tasks in a secure, fast and simple way – zenon. With just one software package, you will benefit from the most important functions for successful

HMI/SCADA projects:

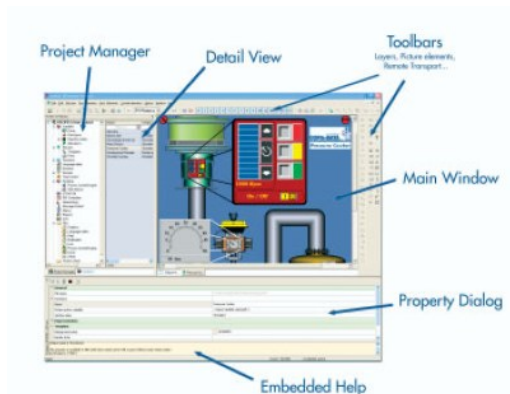
- Multi-project editor—open and work on multiple projects at once, freely sharing objects between projects
- Optimized driver for CTI 2500 Series<sup>®</sup> supports all memory types and data types
- Optional Extended Trend and Historian (Starter Edition) which allows historian files to be saved in multiple formats
- Easy, frame-based screen design allows quick changes to one, many or all screens in the project
- Powerful function editor replaces “scripts” in conventional HMIs to provide high level control of the application
- Make changes to the application while running
- Chronological Event List (CEL) object for tracking and recording events in the system
- Alarm Manager List (AML) object for displaying



and managing alarms



- Full User Administration for setting individual user rights down to the object level
- Power Recipe Manager for batch-based processes
- Ability to connect to the HMI Panel from any PC using a web browser (option)
- Automatic Engineering—Smart wizards perform routine tasks to relieve the workload on your engineers. Free your mind for efficient solutions.
- Object-oriented Parameterization—No more tedious programming work. Parameterize objects easily and efficiently with a mouse click and reuse them again and again.



- Intelligent Integration—One central data source for a better overview, less errors and reduced costs – open to any connection.
- Efficient Reuse—Why start over every time? Reuse projects and modules with zenon's smart import and export functions.
- Elegant Networking—Create fast zenon networks – even with complex structures – with only a few mouse clicks.
- Local and worldwide—You can choose the languages you want to use for Engineering and in the Runtime. You can then simply switch between them at any time.

**ROCK SOLID PERFORMANCE. TIMELESS COMPATIBILITY.**

# 2500 Series® HMI Panels

*Powered by zenon*

## Maintenance and Support Options

Standard warranty included with 2500 Series®

### Maintenance and Support Options

Standard warranty included with 2500 Series® HMI Panels consists of 2yr warranty on hardware and 6 months warranty/upgrades on zenon runtime software. BASIC SUPPORT is included at no additional charge.

### BASIC SUPPORT

- Free lifetime support by email is standard on all HMI panels. All BASIC SUPPORT requests are processed in the order they are received.

### PREMIUM ANNUAL SUPPORT

- Includes priority telephone support with response in 1 business day

### EXTENDED HARDWARE WARRANTY

- Available in 1yr, 2yr, 3yr terms
- Must be purchased at the same time as the HMI panel
- Extends your hardware warranty for 1, 2, or 3 years
- Includes advanced replacement for warranty hardware failures (2 business days), UPS ground shipment (United States only)

### ANNUAL RUNTIME SOFTWARE MAINTENANCE

- Must be purchased at the same time as the HMI panel
- Includes upgrades on the zenon runtime software installed on the HMI panel for 1 year
- All Software Maintenance periods are based on the anniversary of the Activation Date of the license

### ANNUAL DEVELOPMENT SOFTWARE MAINTENANCE

- Must be purchased at the same time as the Editor License
- Includes 1-year upgrades on the zenon Application Development Software for Windows®
- All Software Maintenance periods are based on the anniversary of the Activation Date of the license



# 2500 Series<sup>®</sup> HMI Panels

Powered by zenon

## Ordering information

### HMI Panel

2500-VP15A-N4-W7R	15" HMI Panel, Windows <sup>®</sup> 7 Embedded, NEMA4, 256 tag
2500-VP12-N4-W7R	12" HMI Panel, Windows <sup>®</sup> 7 Embedded, NEMA4, 256 tag
2500-Z256-512	Runtime 256-tag to 512-tag upgrade
2500-Z256-1024	Runtime 256-tag to 1024-tag upgrade
2500-Z256-2048	Runtime 256-tag to 2048-tag upgrade
2500-Z512-1024	Runtime 512-tag to 1024-tag upgrade
2500-Z512-2048	Runtime 512-tag to 2048-tag upgrade
2500-Z1024-2048	Runtime 1024-tag to 2048-tag upgrade

### Runtime Software Options

2500-Z-ETAS	Extended Trend and Historian (Starter Edition)
2500-Z-WSP	Web Server Pro Light

### Development Software

2500-Z2K-DEV-USB	zenon Application Development Software (Editor), maximum 2048 tags, USB Dongle License Key
------------------	--

### Accessories

2500-VP-PS	65W 110/220 VAC Power Supply
2500-VP-PSC	NOTE: any 24V +/- 10%, 2A power supply can be used 3-pin power supply connector
2500-VP-VESA-ADPT-KIT	VESA mount bracket kit

### Maintenance and Support

2500-VP15-ASC	Premium Annual Support
2500-VP15-EXW1	Extended Hardware Warranty, 1-year (total warranty 3 years)
2500-VP15-EXW2	Extended Hardware Warranty, 2-years (total warranty 4 years)
2500-VP15-EXW3	Extended Hardware Warranty, 3-years (total warranty 5 years)
2500-Z256-RT-AMP	Annual Runtime Software Maintenance, 256 tag
2500-Z512-RT-AMP	Annual Runtime Software Maintenance, 512 tag
2500-Z1K-RT-AMP	Annual Runtime Software Maintenance, 1K tag
2500-Z2K-RT-AMP	Annual Runtime Software Maintenance, 2K tag
2500-Z2K-DEV-AMP	Annual Development Software Maintenance, 2K tag