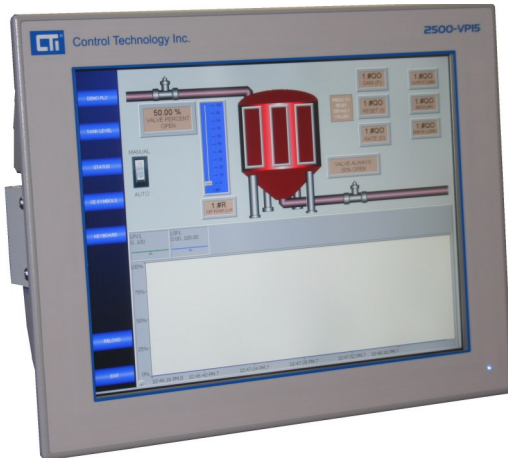


# 2500 Series<sup>®</sup> Flat-Panel PCs with Windows<sup>®</sup> 7 Embedded



## Description

2500 Series<sup>®</sup> Flat-Panel PCs make a good platform for integrating your own Windows<sup>®</sup> 7 based HMI applications into 2500 Series<sup>®</sup> Systems. The panels are available in 15" and 12" sizes and are based on the latest Intel Atom processor technology and feature a high-brightness LCD panel for easy readability under industrial conditions. The Windows<sup>®</sup> 7 Embedded operating system allows installation and operation of any Windows<sup>®</sup> 7 compatible application.

## Hardware Specifications

<b>CPU</b>	Intel <sup>®</sup> Atom <sup>™</sup> N2600 1.6GHz
<b>Memory</b>	2GB DDR2 SDRAM
<b>Network</b>	2 x RJ-45 10/100/1000Base-T
<b>Storage</b>	CFast Card Socket with 32GB
<b>LCD Display</b>	15" TFT LCD (VP15A) 12" TFT LCD (VP12)
<b>Resolution</b>	1024 x 768, XGA
<b>Backlight Life</b>	50,000 hours
<b>Luminance</b>	400 cd/m <sup>2</sup> (VP15A) 500 cd/m <sup>2</sup> (VP12)
<b>Touch Screen</b>	5-wire, resistive
<b>Other Ports</b>	USB 2.0, 5 ports Serial (4 RS 232 ports)
<b>Power</b>	24VDC +/-10%, 2A

## Environmental

Operating temp	0 to +55C
Storage temp	-20 to +70C
Humidity	10% - 95% noncondensing
Vibration	1Grms
Ingress	NEMA4, IP65

## Mechanical

<b>Dimensions</b>	390 x 52.3 x 310mm (VP15A) 15.4 x 2.06 x 12.2 in (VP15A) 326 x 44 x 259mm (VP12) 12.8 x 1.73 x 10.2 in (VP12)
<b>Weight</b>	4.4kg (9.7 lb)

## Shipping

<b>Dimensions</b>	500 x 200 x 460mm 20" x 8" x 18"
<b>Weight</b>	7kg (15 lb)

**Certifications** CE, FCC Class B

**Warranty** 2 years

## Software Specifications

Operating System

Windows<sup>®</sup> 7 Embedded



**Control Technology Inc.**

5734 Middlebrook Pike, Knoxville, TN 37921-5962  
Phone: +1.865.584.0440 Fax: +1.865.584.5720  
www.controltechnology.com

**ROCK SOLID PERFORMANCE. TIMELESS COMPATIBILITY.**

# 2500 Series<sup>®</sup> Flat-Panel PCs with Windows<sup>®</sup> 7 Embedded

## Maintenance and Support Options

Standard warranty included with 2500 Series<sup>®</sup> Flat-Panel PCs consists of 2yr warranty on hardware. BASIC SUPPORT is included at no additional charge.

### BASIC SUPPORT

- Free lifetime support by email is standard on all Flat-Panel PCs. All BASIC SUPPORT requests are processed in the order they are received.

### EXTENDED HARDWARE WARRANTY

- Available in 1yr, 2yr, 3yr terms
- Must be purchased at the same time as the Flat-Panel PC panel
- Extends your hardware warranty for 1, 2, or 3 years
- Includes advanced replacement for warranty hardware failures (2 business days), UPS ground shipment (United States only)

## Ordering information

### HMI Panel

2500-VP15A-N4-W7	15" Flat-Panel PC, Windows <sup>®</sup> 7 Embedded, NEMA4
2500-VP12-N4-W7	12" Flat-Panel PC, Windows <sup>®</sup> 7 Embedded, NEMA4

### Accessories

2500-VP-PS	65W 110/220 VAC Power Supply NOTE: any 24V +/- 10%, 2A power supply can be used
2500-VP-PSC	3-pin power supply connector
2500-VP-VESA-ADPT-KIT	VESA mount bracket kit

### Maintenance and Support

2500-VP15-EXW1	Extended Hardware Warranty, 1-year (total warranty 3 years)
2500-VP15-EXW2	Extended Hardware Warranty, 2-years (total warranty 4 years)
2500-VP15-EXW3	Extended Hardware Warranty, 3-years (total warranty 5 years)