

Designed with the industrial user in mind, FTVersionTrak secures the files essential to your manufacturing or business process, safeguarding them from unauthorized access, accidental deletion, or loss.

FTVERSIONTRAK

Have you ever:

- Lost a PLC program because the processor in which it's running fails?
- Experienced production downtime due to lost or out-of-date program files?
- Been unable to determine if a file is the most current version?
- Discovered multiple copies of the same file and been unable to determine differences?
- Made changes to a file only to discover it was not the most current version?
- Mistakenly deleted or overwritten changes in an important file?
- Struggled to meet FDA Title 21 CFR Part 11 standards for electronic record-keeping?

Without a file management system these situations are common and costly. Designed with the industrial user in mind, FTVersionTrak streamlines your file change management and version control activities and offers the highest level of protection for your critical systems. Acting as insurance against lost or overwritten PLC programs, FTVersionTrak stores successive versions of your files. Should a problem occur, backup copies are available.



HOW IT WORKS

FTVersionTrak creates a repository, which is a central and secure location for files and folders stored in a SQL database. To the user, the system looks much like the familiar Windows File Explorer. For highest data integrity, files stored in FTVersionTrak cannot be accessed directly.

While more than one authorized user may view a file, only one person may check it out at a time, preventing inadvertent changes to multiple copies of the same file. When checked back into the repository, FTVersionTrak stores the new file version with all previous versions, keeping the original data intact and retrievable.

FEATURES AND BENEFITS

FTVersionTrak provides:

- **Conflict resolution for file sharing within a team environment:** This means that time is not wasted redoing work, and the frustration that results is eliminated.
- **Familiar folder tree structure:** The FTVersionTrak interface design ensures ease of use.
- **Multiple version labeling options:** Flexibility is provided to customize usage according to your company's specific requirements.
- **Support for electronic signatures (FDA 21 CFR Part 11 Standard):** FTVersionTrak helps you comply with regulatory requirements.
- **Simultaneous SQL and Windows integrated security:** Utilize the benefits of each type of security with the assurance that your data is protected.

Secure Your Important Files

FTVersionTrak secures your important files. With FTVersionTrak you can:

- **Easily control who accesses your files**
- **Know what changes were made, who made the changes, and when the changes were made**
- **Easily roll back the changes**

Streamline File Management

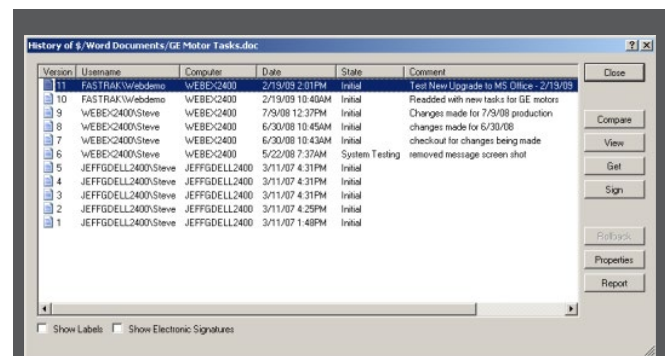
Use FTVersionTrak to securely manage any file. FTVersionTrak allows you to:

- **Securely archive any type of file** such as PLC programs and HMI projects including those represented by multiple files and/or directories such as TISOFT and Siemens Step 7. Other types of files such as Word documents and Excel spreadsheets are also conveniently supported by FTVersionTrak.
- **Electronically sign documents.** FTVersionTrak conforms to Title 21 CFR Part 11 standards for electronic recordkeeping to help you comply with FDA regulations.

Simplify File Sharing

FTVersionTrak allows you to safely share files among multiple programmers, engineers, and other users, ensuring that one user's edits are not overwritten by another. Using FTVersionTrak you can:

- **Save multiple versions of the same file.** Comparing versions of the same file identifies differences and allows roll back to previous versions if a change causes unexpected results.
- **Resolve file sharing conflicts.** Eliminate the unnecessary rework and frustration that results when changes across multiple team members are not controlled.



Version	Username	Computer	Date	State	Comment
11	FASTRAK\Webdemo	WEBE-C2400	2/13/09 2:01PM	Initial	Test New Upgrade to MS Office - 2/13/09
10	FASTRAK\Webdemo	WEBE-C2400	2/13/09 10:40AM	Initial	Readded with new tasks for GE motors
9	WEBE-C2400\Steve	WEBE-C2400	7/9/08 12:37PM	Initial	Changes made for 7/9/08 production
8	WEBE-C2400\Steve	WEBE-C2400	6/30/08 10:45AM	Initial	changes made for 6/30/08
7	WEBE-C2400\Steve	WEBE-C2400	6/30/08 10:43AM	Initial	checklist for changes being made
6	WEBE-C2400\Steve	WEBE-C2400	5/22/08 7:37AM	System Testing	removed message screen shot
5	JEFFGDELL2400\Steve	JEFFGDELL2400	3/11/07 4:31PM	Initial	
4	JEFFGDELL2400\Steve	JEFFGDELL2400	3/11/07 4:31PM	Initial	
3	JEFFGDELL2400\Steve	JEFFGDELL2400	3/11/07 4:31PM	Initial	
2	JEFFGDELL2400\Steve	JEFFGDELL2400	3/11/07 4:29PM	Initial	
1	JEFFGDELL2400\Steve	JEFFGDELL2400	3/11/07 1:48PM	Initial	

View at a glance who made changes to critical documents, when they were made, and why.

USE FTVERSIONTRAK WITH PLC WORKSHOP

FTVersionTrak provides additional functionality to FasTrak's PLC WorkShop for 505 and PLC WorkShop for Modicon products. Integrating version control tools into the familiar PLC WorkShop interface makes program change management a seamless part of your regular programming and troubleshooting activities.

Without requiring access to the FTVersionTrak software application itself, you can:

- Get the latest version of a PLC Workshop program file
- Check PLC WorkShop files out to prevent changes from being made by another program
- Check PLC WorkShop files back in after edits have been made to secure the latest version
- Compare two PLC WorkShop files side-by-side to determine all differences
- View edit dates and comments about what has changed in each version of a PLC WorkShop file
- Affix electronic signatures to PLC WorkShop files

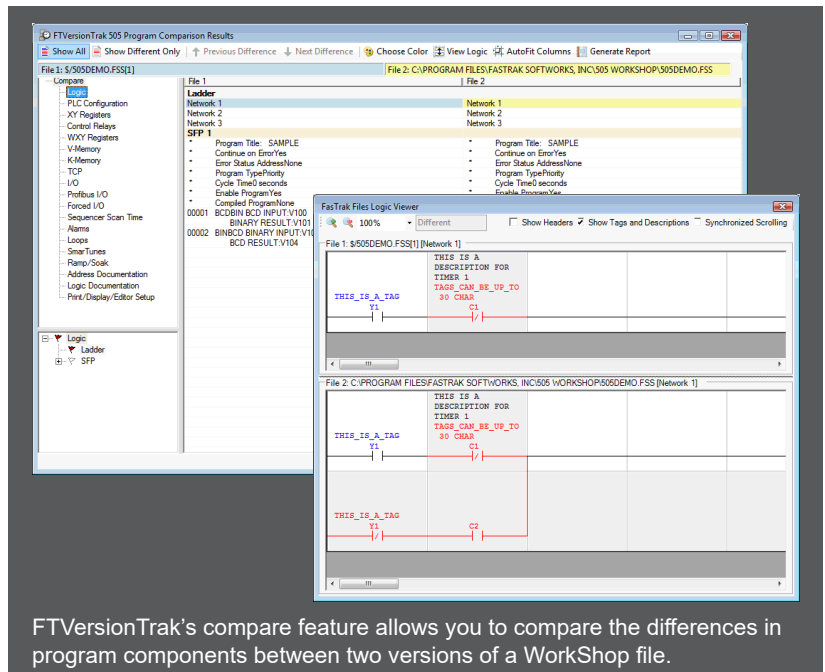
FTVersionTrak Advanced Compare

FTVersionTrak allows you to save multiple versions of the same PLC WorkShop for 505 or PLC WorkShop for Modicon file and compare them against each other. FTVersionTrak displays a side-by-side comparison of all logic, configuration, and other areas of the program. Should an edit cause undesired results, FTVersionTrak allows you to roll back to a previous version.

Automatically Back Up Your PLC Programs

In a typical manufacturing environment, making changes directly to online PLC programs is common. However, saving a backup file each time a change is made can be easily forgotten or put off for another day. When a PLC stops working, any programs contained within may be irretrievable. FTVersionTrak allows you to automatically back up programs directly from the PLC, assuring that if hardware fails, your program remains intact and immediately available to download to another PLC.

FTVersionTrak may be scheduled to upload logic from a Simatic 505, CTI 2500, or Modicon PLC to a file in a secured directory on your computer. Simply select the time and frequency of the upload. FTVersionTrak will perform the upload at the appointed time—and if you choose, only if a difference exists between the program in the PLC and the backup file.



FTVersionTrak's compare feature allows you to compare the differences in program components between two versions of a WorkShop file.

FTVERSIONTRAK FEATURE COMPARE

The FTVersionTrak Programmer Edition (FTVersionTrak PE) is included as part of PLC WorkShop Suite packages. It has been designed for use by a single programmer. Multi-user and automated backup capabilities are available in the advanced edition of FTVersionTrak, which may be purchased separately and is also included as part of PLC WorkShop SuperSuite packages.

	FTVersionTrak PE	FTVersionTrak
Access FTVersionTrak from WorkShop	X	X
Access the FTVersionTrak client	X	X
Archive WorkShop files	X	X
Access files within a repository	X	X
Check files in and out	X	X
Save multiple versions of the same file	X	X
Compare files	X	X
Affix electronic signatures	X	X
Share files among multiple users		X
Set user rights and security		X
Secure access through user logins		X
Create more than one repository		X
Access files from a centralized server		X
Schedule automated backups of programs from PLCs		X

SPECIFICATIONS

Supported Databases

MS SQL Server 2005
 MS SQL Server 2005 Express
 MS SQL Server 2008
 MS SQL Server 2008 Express (included)
 MS SQL Server 2012 R2
 MS SQL Server 2014
 MS SQL Server 2016

Operating Systems

Client Workstations

Windows XP Professional w/SP1 or later
 Windows Vista
 Windows 7
 Windows 8
 Windows 10

Note: Home / consumer versions of Windows are not supported.

Database Operating Systems

Windows Server 2003 SP1 or later
 Windows Server 2008
 Windows XP Professional SP1A or later
 Windows Vista
 Windows 7
 Windows 8
 Windows 10

Hardware Requirements

PC Platform

Recommended – 1 GHz or greater

Memory

Recommended – 512 MB or greater

Hard Disk Space Required

100 MB for client, 525 MB minimum for database

FTVersionTrak and WorkShop are trademarks of FasTrak SoftWorks, Inc. Simatic, 505, TISOFT, and Step 7 are trademarks of Siemens. Modicon is a trademark of Schneider Electric, Inc. Allen-Bradley is a registered trademark of Allen-Bradley. Windows is a registered trademark of Microsoft Corporation. Other product names mentioned herein are used for identification purposes only and may be trademarks of their respective companies.